



Wolf Ridge

\$146,190



Wolf Ridge Custom Home

This cozy lodge-style retreat boasts a startling array of windows allowing for an unprecedented amount of nature light. Spacious, covered decks that wrap nearly all the way around the house ensure year around enjoyment of the great Northwest outdoors. All Ridgeline Home plans can be customized and modified to fit any need, so please let us know how we can build your dream.

2-Bedroom, 2-bath.
1329 sq feet

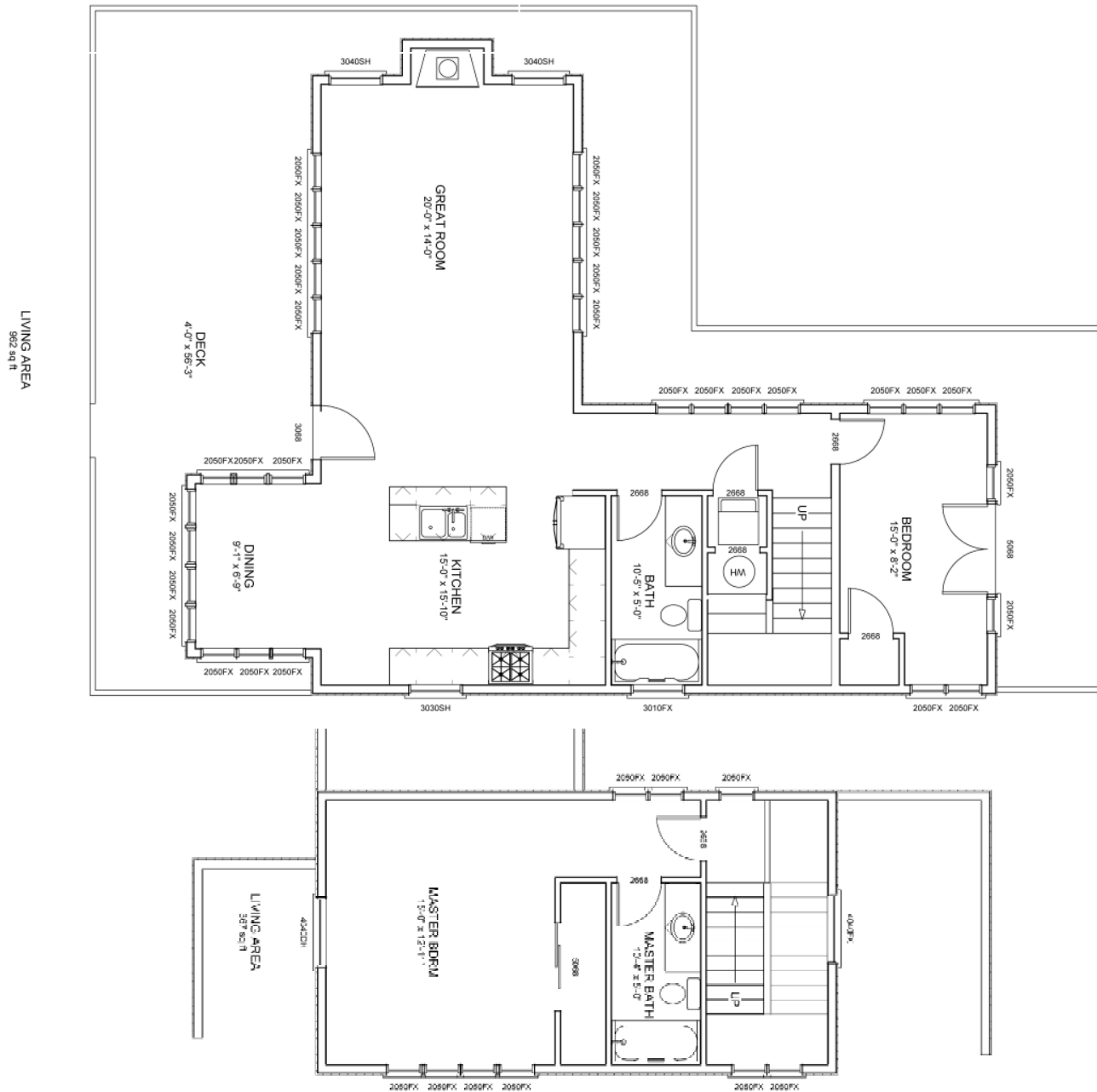
2- Story
Great Room



Ridgeline Construction
780 N. Cecil Road, Suite 104
Post Falls, Idaho 83854
208-651-4444
www.RidgelineCR.com

Price includes standard finishes. Excludes excavation, land, taxes, hook-up & impact fees and utilities. Please contact us for an exact quote on your project. Price subject to change without notice.

Wolf Ridge



Ridgeline Construction is a design-build construction company located in beautiful Coeur d'Alene, Idaho. We have been building quality homes in North Idaho and Eastern Washington since 2004. Many of our dedicated staff have been working in the construction industry in Coeur d'Alene for over 20 years. Our projects have received numerous awards for both design and construction and our company has been featured in trade magazines and newspapers. We have designs that range from under 1000 square feet to over 4000. Ridgeline is a true custom-home builder, not a commercial company trying to build residential homes or a tract-house builder trying to build customs. As such, we can customize any of our plans to fit your specific needs. Or we can start with a clean sheet of paper and design the exact home of your dreams. Please speak with one of our sales reps or call us at 208-651-4444 and let us show you how Ridgeline Construction can build your dream.



Ridgeline Construction & Remodeling
 780 N. Cecil Road, Suite 104
 Post Falls, Idaho 83854
 208-641-4444
www.RidgelineCR.com