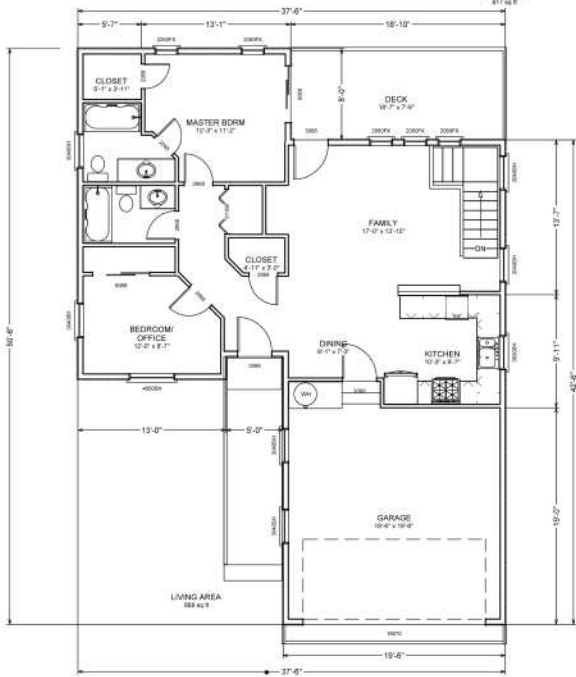
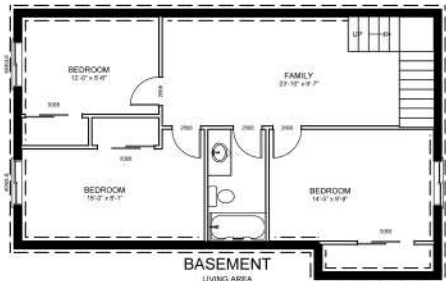


Selkirk Ridge at Prairie Sky

\$158,474



1706 Square feet, 5-Bedroom, 3-Bath Rancher with daylight basement. Huge great room, master suite, dual family rooms. Upstairs completely finished with 2 bedrooms, unfinished basement with an additional 3 bedrooms. Vaulted ceilings in main level great room ensure a spacious feel in this custom cottage. Hand-stacked beam work, colored vinyl windows, breakfast bar and tile backsplash guarantee this fine home feels like a custom built just for you. Basement completely finished for an additional \$30,521



Joel Olson
Associate Broker
CRS, ABR, E-Pro
Windermere Realty
(208) 659-0372



Steve Rinker
Realtor
Windermere Realty
(208) 699-1149



Ridgeline Construction
780 N. Cecil Road Suite 104
Post Falls, Idaho 83854
208-651-4444 www.RidgelineCR.com



Windermere / Coeur d'Alene Realty, Inc.
1000 Northwest Blvd.
Coeur d'Alene, ID 83814
(208) 664-9221 www.CdARealty.com

Rendering is artist's depiction of proposed construction. Each house is custom designed to buyer's specs and as such actual house may look different than that rendered.

