



# Scottish Ridge

\$110,277



## Scottish Ridge Custom Home

This adorable little rancher boasts a surprisingly roomy 3 bedroom, 2 bath with a large great room and very usable kitchen. Master suite, full laundry room, pantry, large single car garage and a welcoming sitting porch. An amazingly cost-effective home without sacrificing the amenities you care about.

3 Bedroom, 2 Bath  
1033 sq ft

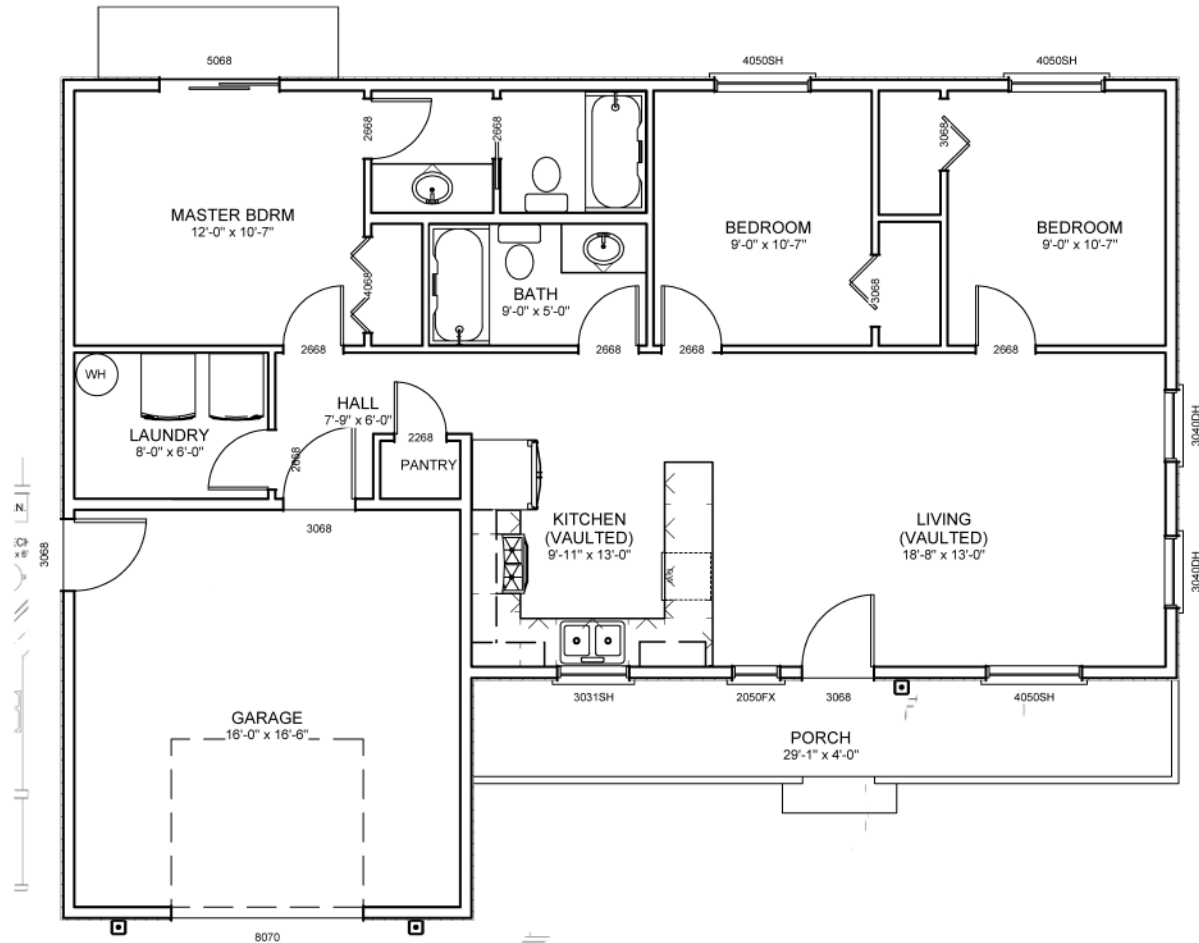
Vaulted Great Room  
Master Suite



Ridgeline Construction  
780 N. Cecil Road, Suite 104  
Post Falls, Idaho 83854  
208-651-4444  
[www.RidgelineCR.com](http://www.RidgelineCR.com)

Price includes standard finishes. Excludes excavation, land, taxes, hook-up & impact fees and utilities. Please contact us for an exact quote on your project. Price subject to change without notice.

# Scottish Ridge



LIVING AREA  
1033 sq ft

Ridgeline Construction is a design-build construction company located in beautiful Coeur d'Alene, Idaho. We have been building quality homes in North Idaho and Eastern Washington since 2004. Many of our dedicated staff have been working in the construction industry in Coeur d'Alene for over 20 years. Our projects have received numerous awards for both design and construction and our company has been featured in trade magazines and newspapers. We have designs that range from under 1000 square feet to over 4000. Ridgeline is a true custom-home builder, not a commercial company trying to build residential homes or a tract-house builder trying to build customs. As such, we can customize any of our plans to fit your specific needs. Or we can start with a clean sheet of paper and design the exact home of your dreams. Please speak with one of our sales reps or call us at 208-651-4444 and let us show you how Ridgeline Construction can build your dream.



Ridgeline Construction & Remodeling  
780 N. Cecil Road, Suite 104  
Post Falls, Idaho 83854  
208-641-4444  
[www.RidgelineCR.com](http://www.RidgelineCR.com)