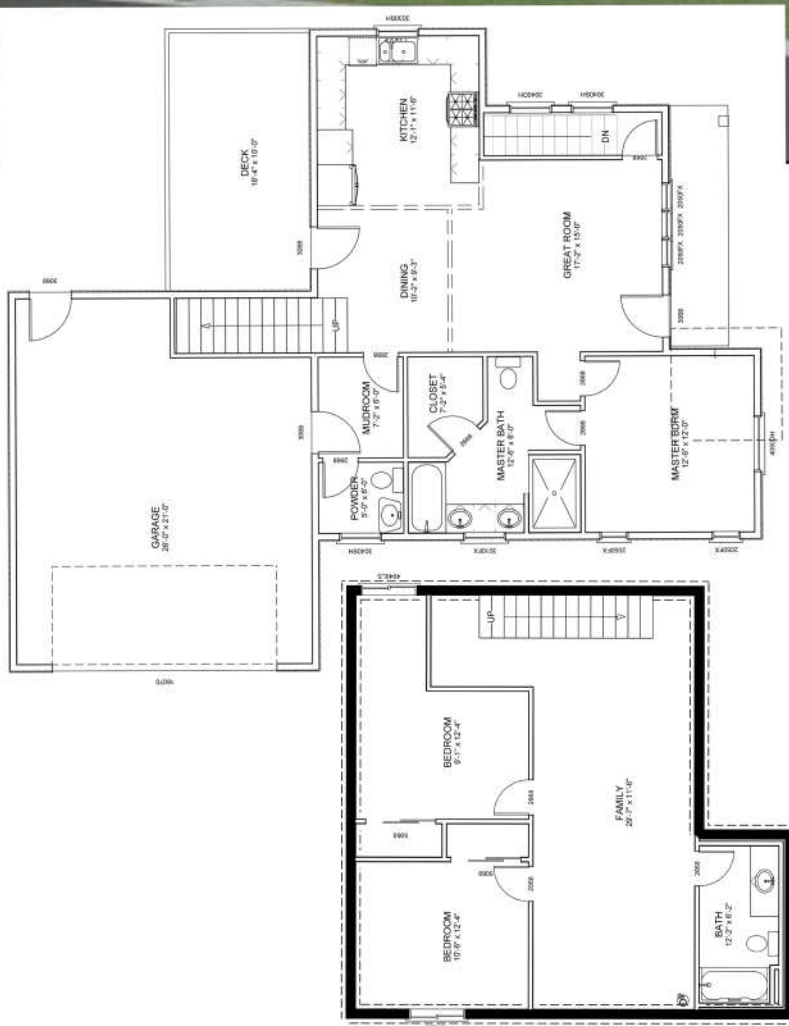


Olympic Ridge at Prairie Sky

\$163,550



2165 sq ft completely finished, this gorgeous home starts at 936 sq ft with unfinished basement and bonus room. Huge great room for entertaining, large master suite and sitting porch make this quite a charmer. \$197,720 gets a completely finished 3 bedroom, 2 and a half bath with bonus room and all the amenities that will bring enjoyment for years to come. Basement level can be reconfigured for 4 bedrooms total, please just ask to find out more.



Joel Olson
Associate Broker
CRS, ABR, E-Pro
Windermere Realty
(208) 659-0372



Steve Rinker
Realtor
Windermere Realty
(208) 699-1149



Ridgeline Construction
780 N. Cecil Road Suite 104
Post Falls, Idaho 83854
208-651-4444 www.RidgelineCR.com



Windermere / Coeur d'Alene Realty, Inc.
1000 Northwest Blvd.
Coeur d'Alene, ID 83814
(208) 664-9221 www.CdARealty.com

Rendering is artist's depiction of proposed construction. Each house is custom designed to buyer's specs and as such actual house may look different than that rendered.

